

Case Study

National Museum of Scotland, Edinburgh

Project: Saint-Gobain weber tile technologies for National Museum of Scotland, Edinburgh
Size: 3000m²
Product: weber.set rapid SPF, weber joint fine flex
Client: Gareth Hoskins Architects of Glasgow
Contractor: Plunkett Tiling



Project Brief

Saint-Gobain weber's innovative Low Dust and Mould Stop Technologies have been used by Plunkett Tiling Contractors Limited of Northumberland in an award-winning restoration programme for the National Museum of Scotland in Edinburgh. The alteration of the Museum's interior space is part of a plan to encourage discovery starting from the top of the building as only 5% of visitors ever explore its top floor. This is now accessed by new stairs, glass lifts and escalators that encourage visitors to follow them upwards.

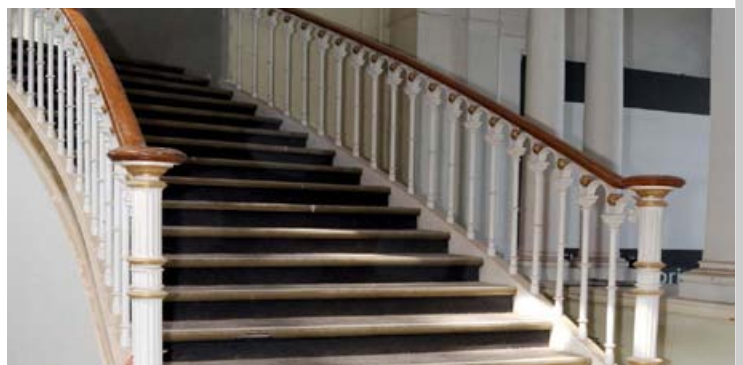
The £47m three-year project by Gareth Hoskins Architects of Glasgow saw a complete reconfiguration of the internal space, the successful completion of which resulted in the Museum winning the Andrew Doolan Award for The Best Building in Scotland 2011.



weber.set rapid SPF



weber.joint fine flex



Saint-Gobain weber Ltd
Dickens House, Enterprise Way, Maulden Road,
Flitwick, Beds MK45 5BY, UK
Tel: (08703) 330070 Fax: (01525) 718988
E-mail: mail@weberbuildingsolutions.co.uk
www.weberbuildingsolutions.co.uk

 **weber**
SAINT-GOBAIN

Case Study

National Museum of Scotland, Edinburgh

Project: Saint-Gobain weber tile technologies for National Museum of Scotland, Edinburgh
Size: 3000m²
Product: weber.set rapid SPF, weber joint fine flex
Client: Gareth Hoskins Architects of Glasgow
Contractor: Plunkett Tiling



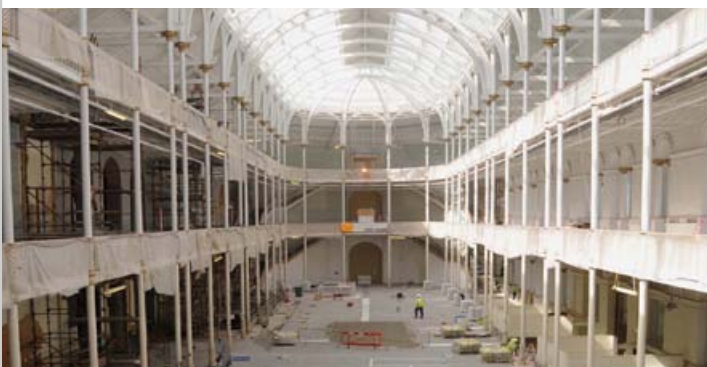
Solution

One of the UK's largest tiling contractors, Plunkett Tiling undertook 3000m² of work to the entrance hall, Grand Gallery and the showpiece staircases leading off the Gallery, using natural Jura Beige limestone tiles. One of the hardest limestones quarried today and offering ultimate durability at roughly 20mm thick, this stone can be used in any premium commercial project.

Plunkett specified the use of 40 tonnes of Saint-Gobain weber.set rapid SPF with Low Dust Technology (LDT) as this dramatically reduced the airborne dust created during pouring and preparation to help ensure a more comfortable and cleaner environment for tile contractors and their customers. Plunkett also used weber.joint fine flex, a water-repellent, mould-resistant, flexible tile grout

for interior and exterior use. Ideal in situations where some movement or vibration is expected, it is enhanced by Saint-Gobain Weber's Mould Stop Technology to give lasting protection against mould growth.

Both products are manufactured in the UK at Saint-Gobain weber's three manufacturing locations in Ballyclare, Northern Ireland; Flitwick, Bedfordshire and Telford, Shropshire. "Having capacity to manufacture locally is good on all counts," says Rachel Appleyard, Product Manager at Saint-Gobain weber. "We can maintain product quality and consistency while ensuring the shortest route to market, which is good for our environmental impact and competitive pricing policies."



Saint-Gobain weber Ltd
Dickens House, Enterprise Way, Maulden Road,
Flitwick, Beds MK45 5BY, UK
Tel: (08703) 330070 Fax: (01525) 718988
E-mail: mail@weberbuildingsolutions.co.uk
www.weberbuildingsolutions.co.uk

 **weber**
SAINT-GOBAIN